

FLOORPLANS



ASHTON
1 BEDROOM • 1 BATH
654 SQ. FT.
\$ _____



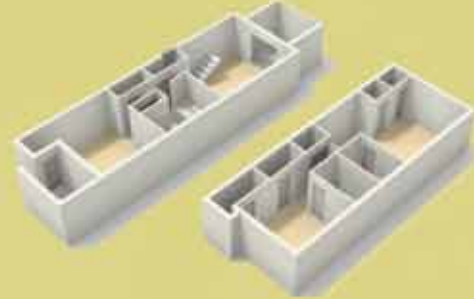
ECLIPSE
2 BEDROOM
2 BATH
1069 SQ. FT.
\$ _____



BENTLEY
2 BEDROOM
1 BATH
846 SQ. FT.
\$ _____



FINESSE
2 BEDROOM
2.5 BATH
TOWNHOME
1301 SQ. FT.
\$ _____



COSMOPOLITAN
2 BEDROOM • 1 BATH
931 SQ. FT.
\$ _____



GRANDE
3 BEDROOM
2 BATH
1362 SQ. FT.
\$ _____



DEVONSHIRE
2 BEDROOM • 2 BATH
1069 SQ. FT.
\$ _____



APPLICATION FEE \$ _____

DEPOSIT \$ _____

ADMINISTRATIVE FEE \$ _____



CAROLINE SQUARE

5959 Ft. Caroline Road | Jacksonville, FL 32277

(904) 743-1277

leasing@rentcarolinesquare.com

www.carolinesquareapartments.com



Special Features

- Newly Remodeled Interiors
- 7 Spacious Floorplans
- Private Balconies and Outside Storage
- Ceiling Fans
- Separate Dining Areas*
- Washer and Dryer Connections
- Extra Large Kitchens with Pantry
- Lots of Closet Space
- Fitness/Health Center
- Playground
- Lighted Tennis Court
- 2 Pools
- On-site Laundry Facilities
- 24-Hour Emergency Maintenance
- Close to Public Transportation
- Electronic Payments Accepted
- Pet Friendly Community
(Breed Restrictions Apply)



*In Select Apartment Homes

WELCOME HOME

Caroline Square Apartments offer 1, 2 & 3 Bedroom floor plans including flats & town homes. Apartment amenities include a freshly renovated clubhouse & fitness center, 2 swimming pools, a lighted tennis court, playground, and a community workroom. Our apartment homes set us apart from other communities by offering full size washer & dryer connections, patios or balconies, and storage rooms plus, water & Trash are included in rent. We are within walking distance to Fort Caroline Elementary, Fort Caroline Middle School, the Jacksonville Public Library and a five minute drive to Terry Parker High School. Caroline Square is along the JTA Busline catering to bus number AR-6. We are within a short distance to Blue Cypress Park, plus minutes from St. Johns Town Center, Jacksonville University, Edward Waters College and Mayport Naval Station. Across the street from our community you will find the convenience of our local Casual Dining. Catch a movie at Regency AMC 24, ten minutes to area night clubs and twenty minutes to Jacksonville Beach.



DIRECTIONS:

Take University Blvd. north, past Jacksonville University to Ft. Caroline Road. Turn right on Ft. Caroline Road, Caroline Square is 1/2 mile on your left.



Scan me

for more for more information about our exciting property!

San Miguel  

CAROLINE SQUARE

Inside pocket